



Special Valve Manufacturer that meets variety of needs.

KYOKUTO VALVE MFG. CO., LTD.

COMPANY PROFILE



Heading for
the future with
great idea and
forward movement

Greetings

Hold fast to 'QUALITY FIRST' and provide reliable and satisfied quality!

As a custom made valve manufacturer, we have been not only developing the products as per customer's request but also manufacturing the special specification products, small quantity batch production.

Due to severe structural change of industries, requirement of high advancement and automation for valve has been enormously increased and we endeavour to respond to it and every customer's needs. Further, we always try to contribute to global industries through information and technology exchange among different industries and industry-academia-government collaboration.

We recommend our wealth of experience and technology for region, nation and company who are considering renew and repair of natural environment.

We value your patronage and appreciate your confidence in us.



Hideki Kabayama
President

Since the company's foundation, we have provided the goods with thorough services. 'Reliability' is, keeping in close contact with customers and staying with the full value of quality for product, to respond to all customer's request, like delivery, cost, other service, etc. 'Satisfaction' is to behavior by putting ourselves in the customers' place. With the above policy, we try hard to become reliable and responsible company.



認証・登録番号0002108

API Monogram License:
Spec.6A
(License No.6A- 2349)
Spec.6D
(License No.6D- 1961)

COMPANY PROFILE

| | |
|---------------------|---|
| Company Name | KYOKUTO VALVE MFG. CO., LTD. |
| Address | 3-42 Shin-Moji, Moji-ku, Kitakyushu City Fukuoka pref. Japan 〒800-0115 Tel: +81-93-481-2836 Fax: +81-93-481-3189 |
| Capital | JPY 20,000,000 |
| Founded | 5 September 1951 |
| Representative | Mr. Hideki Kabayama / President |
| Number of personnel | 58 |
| Area | 8,580 sq. meters |
| Building | main factory :1,800 m ² |
| Banks | Fukuoka Hibiki Shinkin Bank Fukuoka Bank Sumitomo Mitsui Bank |
| Business Lines | Design & manufacturing and maintenance of valve |
| Certification | *ISO9001 - certified in May 1997 No. Juse-RA-061 *Eco action 21 - certified in Jan 2008 No.0002108 *API Monogram License: Spec.6A(Licence No.6A-2349) Spec.6D(Licence No.6D-1961) |

MILESTONE

| | |
|-----------|--|
| Sep.1951 | Founded as Saiwai Steel Production started to produce and sale general purpose casting and forged valve product and high pressure & high temperature valve |
| Mar.1953 | Transferred the company because of expansion of production volume and changed the company name into Kyokuto Valve Manufacturing. |
| Feb. 1957 | Increased capital by JPY 3.3 million, converted to a corporation - Kyokuto Valve Mfg. Co., Ltd. |
| May 1960 | Increased capital by JPY 8.5 million expanded the equipment |
| Apr. 1967 | Started to develop and manufacture special valve - valve for descaling system, through conduit valve, air motor valve and valve for thermal power plant |
| Apr. 1970 | Increased capital by JPY 20 million expanded assembly and inspection & test area, and improve quality management system |
| Apr. 1971 | Cooperated with Eagle Industry Co., Ltd. and started to develop and manufacture valves for nuclear power plant and chemical plant |
| Apr. 1977 | Started to develop various valves for geothermal power plant |
| Dec. 1977 | High Pressure Gas Factory certified |
| Oct. 1981 | Transferred the company for upsizing the product and production process rationalization and adopted big-sized machine and expand equipment for inspection and test. High Pressure Gas Factory cancelled due to factory relocation. Demand for geothermal power plant of northeastern Japan and south Kyusyu increased. |
| Mar. 1983 | Started to develop and manufacture new product for energy efficiency improvement of descaling system of Steel Mill |
| Oct. 1990 | Increased pressure of descaling system of Steel Mill - high pressure. Demand increase. Supply record of super high pressure - 60MPa. |
| May 1997 | ISO 9001 certified |
| May 2003 | API 6A & 6D certified |
| Jan. 2008 | Eco action 21 certified |
| Apr. 2008 | Started delivery to Indonesia Nationalized Company, PT. Pertamina Geothermal Energy |
| Jun. 2012 | Started delivery to Kenya Electricity Generating Company: KenGen |
| Dec. 2013 | Plan to expand facilities and other equipment as the production volume increases. |
| Jul. 2015 | Certified as "The 4th Kitakyushu Only One Company", Kitakyushu City. |



For the future
and together
with the future

Where we are

Japan boasting world-class technology

Japan consists of four primary islands: Hokkaido, Honshu, Shikoku and Kyushu.

We are located in "Kitakyushu"-northern Kyushu, which is world's leading city of steel industry and famous for green city and manufacturing city.



What we do

Not only select raw material for special specification but also manufacture valve and provide after sale service

We produce various high quality and durable cast, forged, stainless, heat resistant and other special valves for steel mill, geothermal power plant, hydroelectric power plant, chemical industries, etc.

We also provide preventative maintenance service for plant.

VALVE

STEEL MILL



- Spray Valve for descaling system
- ACC Shut Off Valve
- Over Heat Protection Valve
- Pressure Control Valve for plunger pump
- Y type Check Valve
- 3 way 3 direction Spray Valve
- On-off Valve for roll and product cooling
- Flow Control Valve
- Change Off Bypass Valve
- Y type & T type Strainer
- Others (kinds of valve units for energy efficiency improvement of equipment)

GEOHERMAL POWER PLANT



- Through Conduit Valve for Wellhead
- Main Stop Valve (MSV) for Turbine
- Triple Offset Butterfly Valve
- Wellhead Assembly
- Mud Valve for drilling
- 3 Way Valve
- Pneumatic Shut-Off Valve
- Governing Valve
- Control Valve
- Scraper Valve
- Others

GAS AND CHEMICAL INDUSTRY



- Large sized Butterfly Valve
- Tilting Butterfly Valve
- Triple Offset Butterfly Valve
- Pneumatic Parallel Slide Gate Valve
- Jacket type various Valve
- Others

ELECTRIC POWER AND HYDROELECTRIC POWER PLANT



- High Pressure & High Temperature Valve
- Swing Check Valves
- Globe Valve
- Motor-operated & Pneumatic & Hydraulic Valve
- Emergency Discharge Valve for firefighting equipment
- Valve for Boiler Water Supply
- Main Stop Valve (MSV) for Turbine
- Others

ENVIRONMENT AND OTHERS



- Goggle Gate Valve
- Slide Gate Valve
- Knife Gate Valve
- Triple Offset Butterfly Valve
- Cylinder Gate Valve
- Ceramic Filter Valve
- Others

MAINTENANCE

MAINTENANCE WORK AT SITE

Provide reliable maintenance service at site for all kinds of plants.

REPAIR AND MODIFICATION

Provide repair/refurbishment and modification service for reduction of total cost, stable operation of plant, anti aging, preventive inspection and resource utilization.

Market share for the major steel mills in Japan is approximately about 90%

For Steel Mill Industry

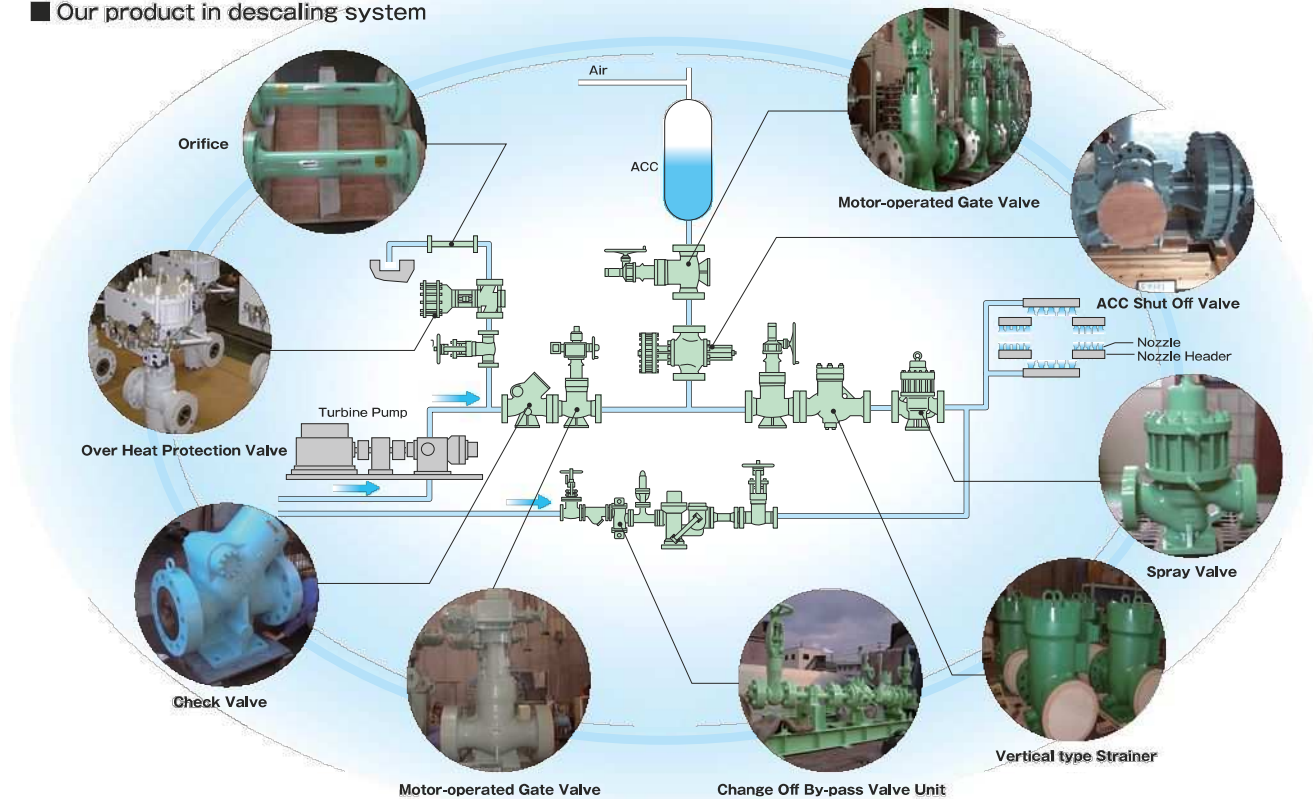
According to special specifications, from design stage until delivery to the plant, and after-sales service

We have been supplying Spray Valve used for Descaling System in Heavy Plate Mill and Hot Strip Mill since the start operation of the steel mill industry in Japan. Under the severe operating conditions, we have solved the problems like Water Hammer, etc. one by one and we acquired a reputation as a reliable spray valve manufacture not only domestically but also internationally.

We have been also supplying valves for high pressure line as well as low pressure line, like on-off valve for roll cooling, flow control valve, high frequency on-off (laminar) valve for product cooling as per customer's request. Continuing the standard type of spray valve with customer trust and wealth of supply record, we have been supplying the new developed vertical type spray valve - compact, easy maintenance and concentric design and 3 way 3 position spray valve - spray width changeable from narrow to wide and vice versa. In order to avoid a water hammer phenomenon, we developed new type of Change Off Bypass Valve by ourselves which can be automatically open and closed by water pressure to allow high pressure water or low pressure water flows, contributing to protection of pipe and improvement of energy efficiency of pump.

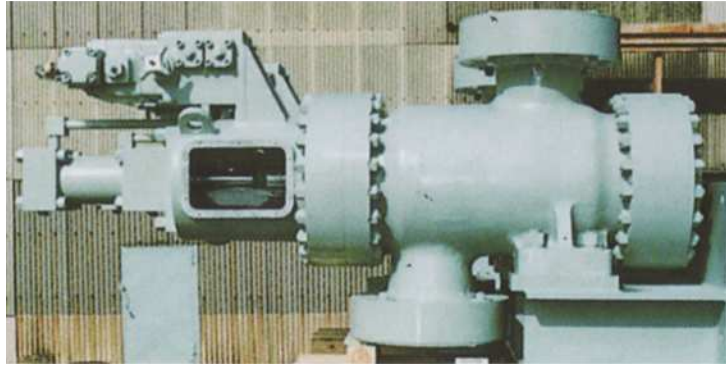
Our design philosophy is to provide the products with long term stable operation and make maintenance & inspection & replacement cycle longer, leading to reduction of running cost.

Our product in descaling system





Vertical Type Spray Valve



Horizontal Type Spray Valve



Various Valve for Descaling System



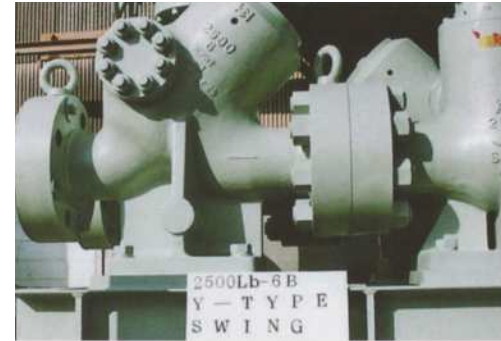
Change Off Bypass Valve Unit



3 way 3 position Spray Valve / Y-type strainer



Change Off Bypass Valve



Swing Check Valve



ACC Shut Off Valve



Over Heat Protection Valve



T type Strainer



Filter tube for strainer



Super High Pressure Gate Valve - 60MPa

Custom made
valve manufacturer
as per customer's
needs

For Geothermal
Power Industry

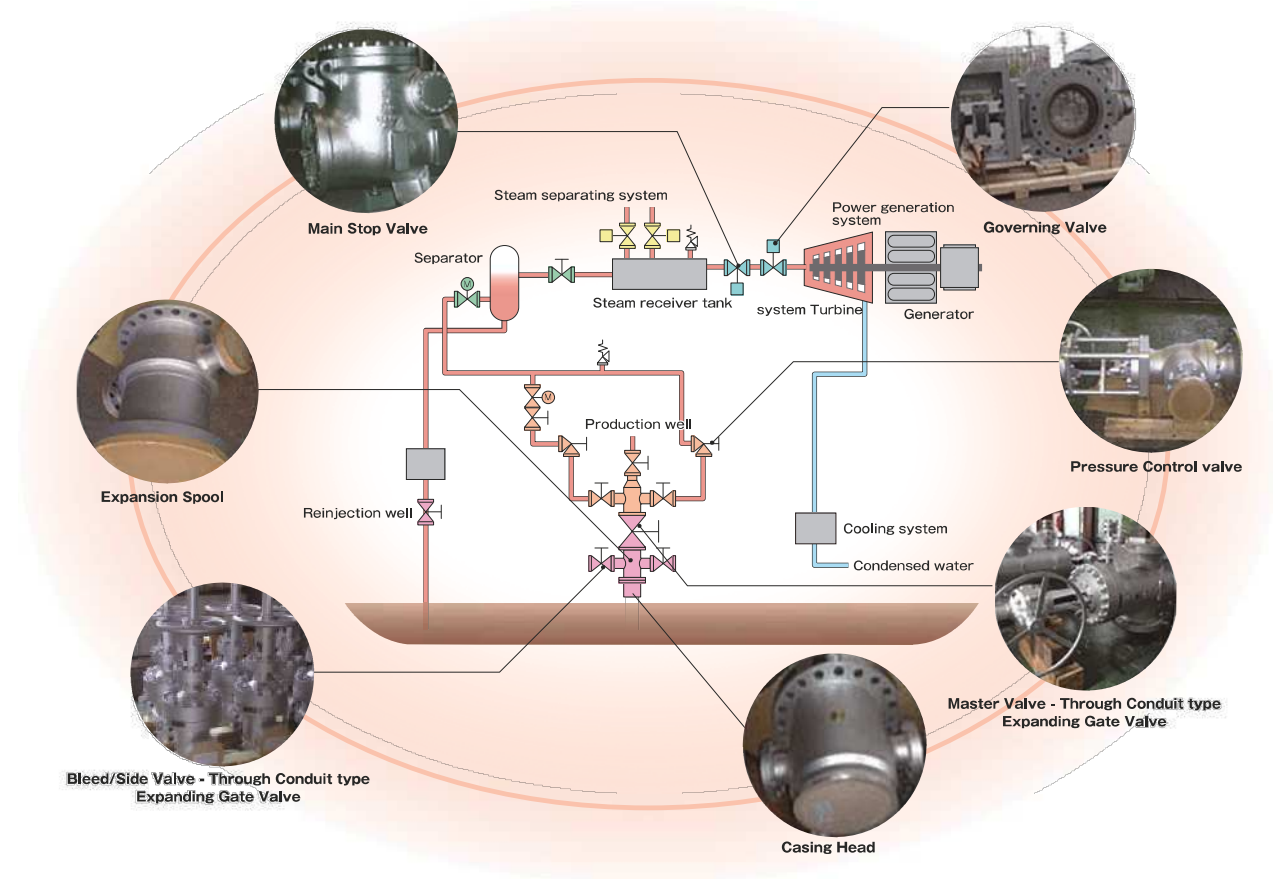
Solid and proven delivery track record not only domestic but also overseas geothermal power plant

From the beginning stage of exploration and development of geothermal power in Japan, we have been developing, manufacturing and supplying valves and accessories for Exploration Well, Production Well and Re-injection Well, valves for Drilling Rig and also valves for Piping Line (downstream).

Normally, master valve for wellhead in geothermal power is used under the severe condition of silica stuck, hydrogen sulfide, foreign matter, etc. And we have two kinds of Master Valve, one is Slab Type, emphasizing operation performance, corrosion and wear/abrasion resistance, and the other is Expanding Type, emphasizing sealing capacity. Further, we can provide wellhead parts, like expansion spool, casing head, adapter flange and other accessories.

We have a wealth of experience of manufacturing and repairing valves and accessories and lots of supply record for geothermal power plant.

Our product in geothermal power plant



KYUSHU ELECTRIC POWER CO., INC.
HATCHOBARU GEOTHERMAL POWER PLANT
(Geothermal power plant using our products)



Wellhead Assembly



Master Valve - Through Conduit type Expanding Gate Valve



Flow Control Angle Valve



Bleed/Side Valve-Through Conduit type Expanding Gate Valve



Through Conduit type Expanding Gate Valve for piping line



Wing Valve - Through Conduit type Expanding Gate Valve



Main Stop Valve for Turbine (Swing Check Type)



Main Stop Valve for Turbine (Butterfly Type)



Scraper Valve

Respond to
any industries -
small quantity
batch production

For Gas and
Chemical
Industry

High quality valve and special valves for Gas and Chemical Industry.

Since our production system is small quantity batch production, we are able to meet and respond to any customer's request and we have been supplying high grade material valves and jacket type valve for warming and thermal insulation and so on for gas and chemical industries. Also we have plenty of supply record of large-sized valves for piping line, pump station etc. for oil, gas and other industries.



Triple Offset Butterfly Valve



Y type Piston Valve



Air Cylinder Piston Valve



Rotary Valve



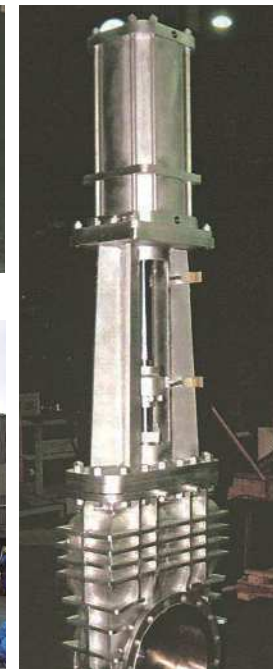
Shield Gas Valve



Motor operated Butterfly Valve for Gas



Oil Cylinder Gate Valve(1600A)



Big-sized Oil Cylinder Gate Valve



Not only domestic
but also overseas

Market
expansion

Our market has been expanding
domestically as well as overseas.

Based on our wealth of experience, know-how and technology from domestic market, we have been providing our reliable valves and services overseas and we are actively developing the new market

Geothermal Power Plant

Hokkaido Electric Power Co., Inc.
● Mori geothermal power plant

Tohoku Electric Power Co., Inc.
● Sumikawa geothermal power plant
● Kakkonda geothermal power plant
● Uenotai geothermal power plant
● Yanaizu-Nishiyama geothermal power plant

Tohoku Sustainable & Renewable Energy Co., Inc.
● Matsukawa geothermal power plant

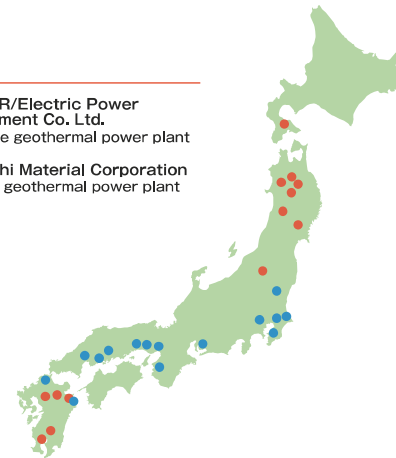
Iwate Geothermal Power Co., Ltd
● Matsuhachimantai geothermal power plant

Yuzawa Geothermal Power
● Wasabizawa geothermal power station

Kyushu Electric Power Co., Inc.
● Takigami power plant
● Hachobaru geothermal power plant
● Ohtake geothermal power plant
● Ohgiri geothermal power plant
● Yamakawa geothermal power plant

J-POWER/Electric Power Development Co. Ltd.
● Onikobe geothermal power plant

Mitsubishi Material Corporation
● Onuma geothermal power plant



Steel mill

NIPPON STEEL CORPORATION
● East Nippon Works (Kashima Area/Kimitsu Area)
● Nagoya Works
● Kansai Works (Wakayama Area)
● Setouchi Works (Hirohata Area)
● Kyushu Works (Yahata Area/Oita Area)

Tokyo Steel Co., Ltd.
● Utsunomiya Plant
● Okayama Plant
● Kyushu Plant

JFE Steel Corporation
● West Japan Works (Kurashiki/Fukuyama)
● East Japan Works (Keihin/Chiba)
● Chita Works

Kobe Steel, Ltd.
● Takasago Works
● Kakogawa Works
● Kobe Works



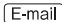


 KYOKUTO VALVE MFG. CO., LTD.

3-42 SHINMOJI, MOJI-KU, KITAKYUSHU CITY, FUKUOKA PREF. JAPAN 〒800-0115

TEL : +81-93-481-2836 FAX : +81-93-481-3189

URL: <http://www.kyokutov.ecnet.jp>

 kyokutov@gold.ocn.ne.jp